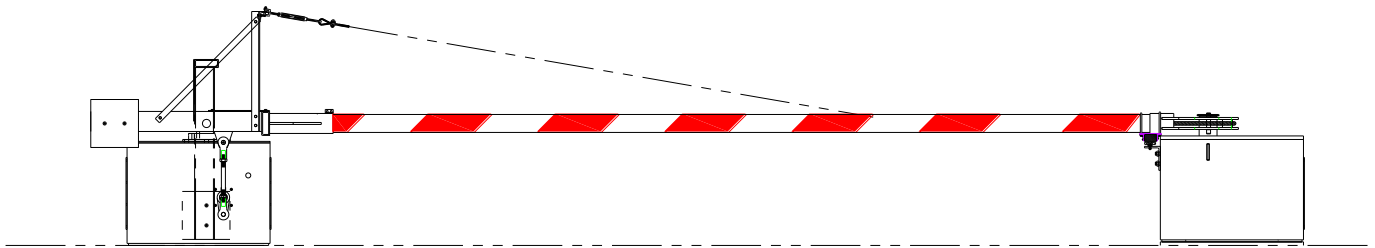




MODEL CR25M Manual Cable Beam Barrier

INSTALLATION MANUAL



B&B ARMOR

Corporate Office & Tech Support:

5900 S. Lake Forest Drive

Suite 230

McKinney, TX 75070

Phone: (972) 385-7899

Toll Free: (800) 367-0387

Fax: (972) 385-9887

E-mail: info@bb-armr.com

techsupport@bb-armr.com

www.bb-armr.com

MADE IN THE USA

INTRODUCTION

Welcome

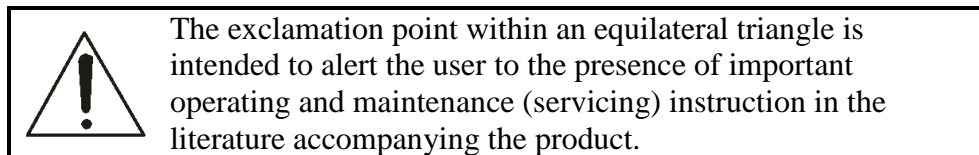
Congratulations on your purchase of a B&B ARMR warning gate. We have years of experience in all aspects of perimeter security and related disciplines, and our products are used throughout the world to control access and to protect people, equipment, and facilities. Your warning gate is designed to give you years of smooth, trouble-free operation.

In addition to providing detailed operating instructions, this manual describes how to install, maintain, and troubleshoot your vehicle barrier. To make it easy to locate the information you need, we've included a detailed Table of Contents immediately following this Introduction. All of this is important information, so be sure to keep the manual available for reference.

If you need help with any aspect of your vehicle barrier's installation or operation, please contact us. We offer a broad range of vehicle barrier and related security services, so you can also call on us for:

- Turnkey installations
- Routine barrier preventative maintenance or emergency repairs (including work on non-B&B ARMR products)
- Spare or replacement parts
- Custom designs or special installations
- Equipment upgrades
- Ancillary security equipment
- Technical support available by phone or in person with advanced scheduled notice.

Safety



Your safety is important to us. If you have any questions or are in doubt about any aspect of the equipment, please contact us. While B&B ARMR does not assume responsibility for injury to persons or property during installation, operation, or maintenance, we can provide verbal guidance, additional written instructions, or the services of a factory engineer. We're here to help you operate your vehicle barrier safely and effectively.

As the user, you are responsible for correct and safe installation, operation, and maintenance of this equipment. Users must follow the specific instructions and safety precautions located in this manual.

In addition:

- Be aware of and follow the safety standards of the Occupational Safety and Health Administration (OSHA), as well as other applicable federal, state, and local safety regulations and industry standards and procedures. For installation outside the United States, users must also follow applicable international, regional, and local safety standards.
- Engage only properly trained experienced staff to install, operate, and maintain the equipment.

- Ensure that all repairs are performed correctly, using properly trained staff and the right tools and equipment.

How to Contact Us

If you have any questions or experience any problems with your vehicle barrier—or if we can help you with any other facility security issues—please contact us directly at:

Corporate/Tech Support:

B&B ARMR

5900 S. Lake Forest Drive, Suite 230

McKinney, TX 75070 USA

Telephone: (972) 385-7899

Toll Free: (800) 367-0387

Fax: (972) 385-9887

E-mail: info@bb-armr.com

techsupport@bb-armr.com

System Installation Record

To assist in documenting the products installed in your system, please take a minute to record the following reference information. This information can be located on the blue B&B ARMR model number plate.

Additional columns are added for your convenience in documenting other components in the system.

Site:			
Job #:			
Date:			
Serial Number:			
Model Number:			
Voltage:			
Phase:			

Table of Contents

INTRODUCTION	2
Safety.....	2
How to Contact Us	3
System Installation Record.....	3
1. ORIENTATION.....	5
1.1 CR25 Drive Stanchion Overview	5
1.2 CR25 Receiver Bollard Overview	6
1.3 CR25 Gate Arm Overview.....	7
2. INSTALLATION	8
2.1 Field Balancing Instructions -CR25 Barriers	8
2.2 Recommended Lubricant.....	9
3. WARRANTY	10
4. GENERAL LAYOUT.....	11

1. ORIENTATION

The CR25 Vehicle Barrier Gate is designed to contain a vehicle impact and prevent that vehicle from entering a restricted access control area. The CR25 is comprised of 3 major components: Drive Stanchion, Receiver Bollard and Gate Arm. This section of the user manual shows these assemblies and details of each.

1.1 CR25 Drive Stanchion Overview

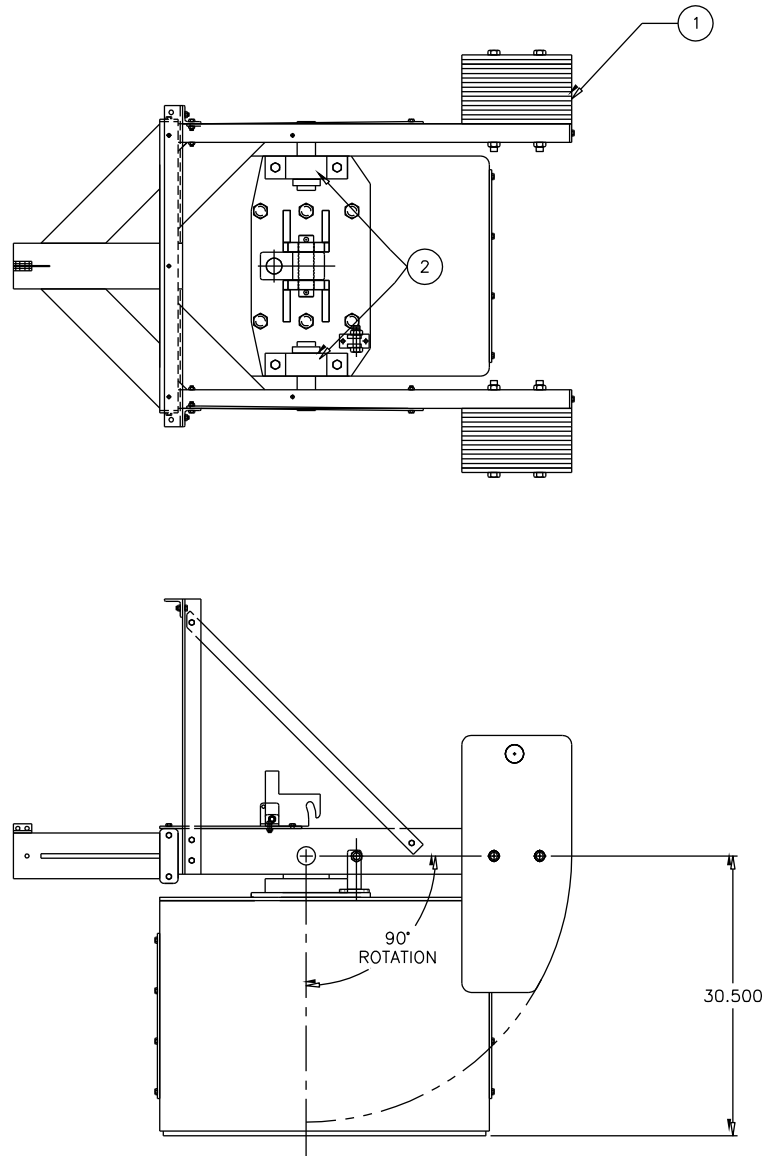


Figure 1 CR25 Drive Stanchion External Parts

1.2 CR25 Receiver Bollard Overview

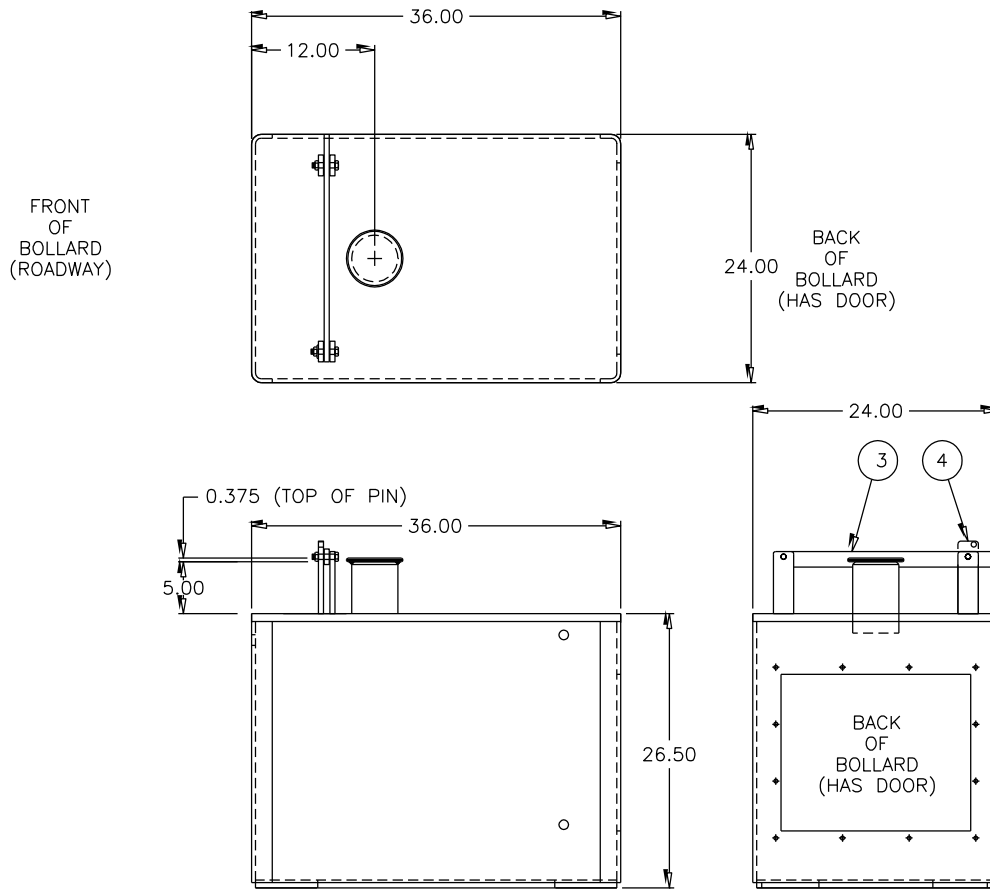


Figure 2 Receiver Bollard

1.3 CR25 Gate Arm Overview

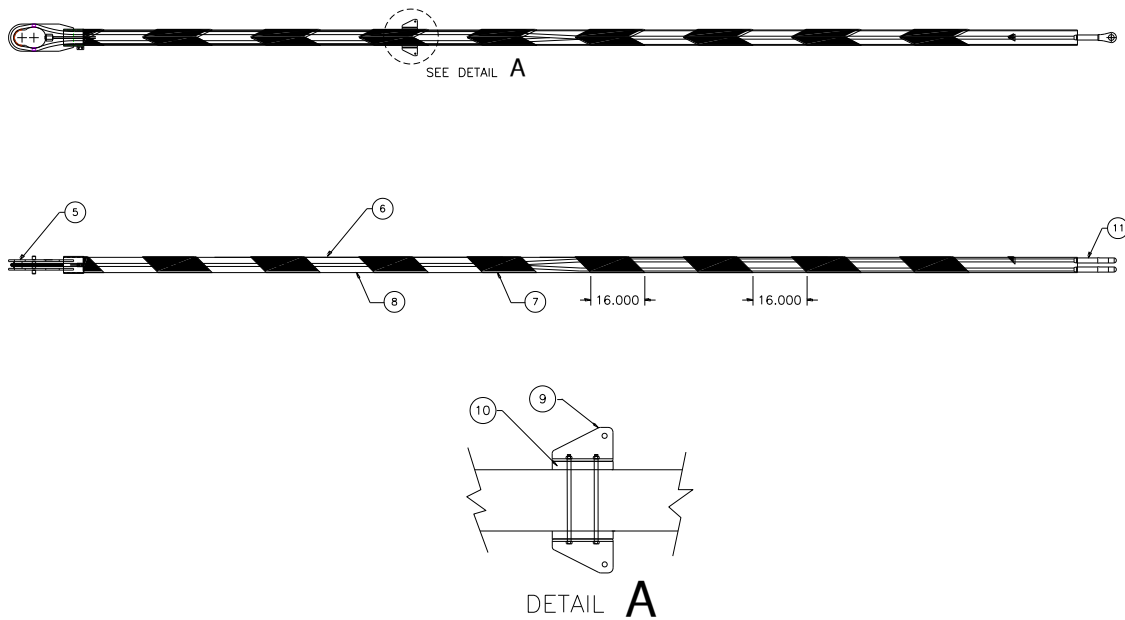


Figure 3 CR25 Gate Arm

ITEM NO	QTY	PART NUMBER	DESCRIPTION
1	AR	ACW-P010	Counterweight
2	2	1701-0200	Bearing, Pillow Block, 2"
3	1	0025-0515	Bar, Horizontal, Lock
4	1	0025-0603	Bar, Vertical, Padlock
5	1	0025-0540	Guide, Arm Cable
6	1	0025-0054-XXX	Arm, XXX=Clear Opening
7	AR	PRS-3932-12R	Stripe, Red Reflective
8	AR	PRS-3930-12W	Stripe, White Reflective
9	1	0100-0615	Bracket, Truss, Pair
10	2	0025-0583	Spacer, Truss
11	1	0160-0006	Cable, Arm, 7/8"

Table 1 CR25M Parts

2. INSTALLATION

NOTE: Failure to install your barrier properly could cause damage to the operating mechanism.

1. Read the instructions and review the project submittal drawings thoroughly. If you do not understand any part of these instructions, please contact the manufacturer.
2. Set foundation as outlined in the project submittal package.
3. Check the anchor bolt locations and prepare the foundation for the barrier. Information on anchor bolt locations can be obtained from the project submittal package.
4. Set the barrier operator and be sure to seal the bottom with duct seal. Housing must be level. Anchor bolts must be tightened evenly.
5. Remove side arm tube cover plate. Locate pillow block bearings. Do not tighten set screws. Now center assembly with housing. When assembly is correctly centered, tighten bearing set screws.
6. Insert arm, with end lock intact, into the main arm tube base. Push tube far enough to make the cable connections at the pivot. After cables have been securely bolted to the pivot mechanism, extend arm so that the end lock saddles satisfactorily over the anchor assembly (on the bollard). Slide lock collar into place and tighten allen bolts.

NOTE: If end lock fails to line up properly, loosen pillow block bearing bolts and rotate laterally. Re-tighten bolts. Now tighten arm base bolts securely. Replace side arm tube cover plate (tighten bolts securely).

7. With the arm in the down position, install the allotted amount of counterweights on the side arm tube assembly. Tighten bolts securely.
8. With the barrier in the lowered position, check end lock mechanism for any type of hindrance with bollard post and adjust accordingly if required.
9. Install and adjust the turnbuckles. Turnbuckles should be snug. DO NOT over tighten as you can warp the gate arm.

2.1 Field Balancing Instructions -CR25 Barriers

IMPORTANT: EVERY BARRIER IS BALANCED AT THE FACTORY BEFORE IT IS SHIPPED. IF ANY ADDITIONS OR CHANGES ARE MADE TO THE BARRIER ARM IN THE FIELD, THE BARRIER MAY REQUIRE RE-BALANCING. AN UNBALANCED ARM MAY DAMAGE THE OPERATOR.

If any additions or changes are made to the barrier, the following guidelines will help you determine what changes, if any, need to be made to the barrier balance:

1. Make the desired changes to the barrier arm.
2. Secure the tip end of the arm to prevent injury or accident.

INDICATIONS	PROBLEM	SOLUTION
Barrier arm tends to raise Requires more than 20 lbs. to keep it closed to traffic.	Barrier is counterweight heavy.	Counterweights can be removed.
Barrier arm tends to lower Requires more than 20 lbs. to keep it open to traffic.	Barrier is arm heavy.	Counterweights can be added.

A properly balanced barrier can be manually operated by one person pushing on the end of the counterweight mounting channel. It should require only 20 lbs. of force to manually operate the barrier.

Calculating Counterweight Requirements

1. Disconnect arm drive by removing top connecting rod bolts located on the side of the operator.
2. Mark any place on the barrier arm and attach a weighing scale to the arm at that point.
3. Measure how much weight, in pounds, it takes to start raising the barrier arm. (arm lbs).
4. Measure, in inches, the distance from the weight point to the center of the pivot point (arm dist).
5. Measure, in inches, the distance from center of pivot point to center of counterweight (cw dist).
6. Follow this formula to get the proper amount of counterweight to add to barrier.

$$\frac{\text{arm lbs} \times \text{arm dist}}{\text{cw dist}}$$

2.2 Recommended Lubricant

The following grease is recommended by the manufacturer of the flange type bearings used on both the warning gates and barriers:

Texaco Marfax or Texaco Starplex grease is the manufacturer's first choice. If this grease is not available, consult your local supplier for an equivalent.

3. WARRANTY

BBRSS warranties for a period of one (1) year FOB manufacturing facility, unless otherwise specified by BBRSS in writing, from defects due to faulty material or workmanship. Damage due to handling during shipment and installation are not covered under warranty. BBRSS assumes no responsibility for service at customer site. BBRSS is in no event responsible for any labor costs under the warranty. Subject to the above limitation, all service, parts, and replacements necessary to maintain the equipment as warranted shall be furnished by others. BBRSS shall not have any liability under these specifications, other than for repair or replacement as described above for faulty product material or workmanship. Equipment malfunction or equipment failure of any kind, caused for any reason, including, but not limited to unauthorized repairs, improper installation, installation not performed by BBRSS authorized personnel, incoming supply power is outside the tolerance for the product, failure to perform manufacturer's suggested preventative maintenance, modifications, misuse, accident, catastrophe, neglect, natural disaster, are not under warranty.

The exclusive remedy for breach of any warranty by BBRSS shall be the repair or replacement at BBRSS's option, of any defects in the equipment. **IN NO EVENT SHALL BBRSS BE LIABLE FOR CONSEQUENTIAL OR SPECIAL DAMAGES OR ANY KIND OF PERSONAL DAMAGES.** Except as provided herein, BBRSS makes no warranties or representations to consumer or to anyone else and consumer hereby waives all liability against BBRSS as well as any other person for the design, manufacture, sale, installation, and/or servicing of the Products.

THE FOREGOING WARRANTIES ARE IN LIEU OF ALL OTHER WARRANTIES EXPRESS OR IMPLIED, INCLUDING THE IMPLIED WARRANTY OF MERCHANTABILITY AND FITNESS FOR A PARTICULAR PURPOSE. NO OTHER WARRANTIES EXIST.

Any modification or alteration by anyone other than BBRSS will render the warranty herein as null and void.

4. GENERAL LAYOUT

